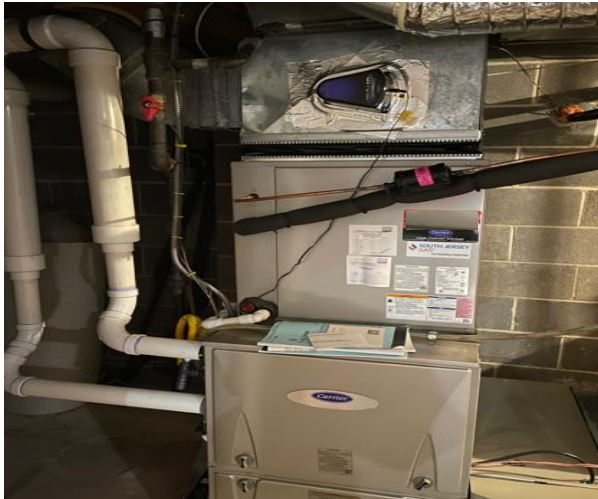


**Is Your System Eligible for an Energy-Efficiency Rebate?**

Replace your existing **standard non-condensing** furnace or boiler with a new, **high-efficiency condensing model** to take advantage of energy-efficiency rebates from **Elizabethtown Gas**.

Rebates will only apply for the replacement of inefficient non-condensing models with new, high-efficiency condensing models. Must submit a photo of the old equipment to be eligible for the rebate. Photos must be clear with nothing blocking the image of the equipment and flue.

**Determining if your system is eligible for a rebate. If your current model looks like this:**



**Replacement of Existing Condensing Equipment**



*Not eligible for rebate.*

**How they work:** A condensing furnace runs the exhaust gases through a secondary heat exchanger to extract the heat that would normally go through the chimney, and uses those gases to heat the building instead; gas temperature can be in the 100 degree range.

**Specifications:** Systems with white PVC, CPVC, Polypropylene or Stainless Steel, Category II or IV flue venting.



**Replacement of Existing Non-condensing Equipment**



*Eligible for rebate.*

**How they work:** Non-condensing systems run the exhaust gasses through a natural draft metal flue system at very high temperatures; gas temperatures can be in the 500 degree range.

**Specifications:** Systems that are standard or mid-efficiency (Category I or III) with flue venting made of galvanized metal.

**Questions?** Contact your contractor or the ETG Residential Energy Efficiency team at 1.201.690.7896 or [ETGSaveEnergy@Service.Clearresult.com](mailto:ETGSaveEnergy@Service.Clearresult.com)